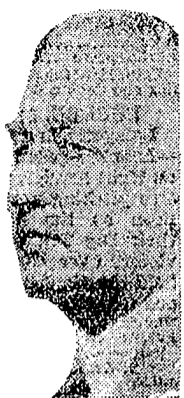


# TODAY'S RADIO BROADCASTS

## Today's Features

### ON W-G-N.

A broadcast of the Columbia and Navy crew race on the Harlem river will be aired over W-G-N at 1 p. m. The race will be described by Robert F. Kelly, Mutual's crew authority, who will view the event from the top of a special Fifth avenue bus, to be driven along the river speedway adjacent to the stream.



John Steele.

The final popular concert of the Chicago Symphony orchestra will be aired exclusively over W-G-N and the coast to coast network of the Mutual Broadcasting system at 8:15 this evening. The concert will be conducted by Dr. Frederick Stock, and Henry Weber, director of W-G-N's concert orchestra, will be the commentator. The program:

Overture to "Oberon".....Weber  
Symphony No. 5. C Minor. Opus 67  
.....Beethoven  
Neapolitan Scenes.....Masseten  
Hungarian Rhapsody No. 2.....Liszt  
Military March. "Pomp and Circumstance," Opus 39.....Elgar

John Steele, Mutual's commentator, will be heard from London in his bi-weekly talk on European affairs at 8 p. m.

### Other features:

7 a. m.—California Sunshine.  
10:30—U. S. Army band.  
11:15—The Magic Hour.  
1:45 p. m.—The Lead-Off Man.  
1:55—Baseball—Chicago Cubs vs. St. Louis Cardinals.  
7—Reading of THE TRIBUNE and Sports Celebrity Parade.

### ON OTHER STATIONS.

1 p. m.—WMAQ—Meeting of American Society of Newspaper Editors; "Ridding Public Opinion of Superstition," President W. A. Eddy of Hobart college.  
3:55—WENR—Orthodox Easter service from Sofia, Bulgaria.  
4—WMAQ—Great Plays, "The Silver King."  
7—WBBM—Swing club, with Mildred Bailey and Red Norvo.  
7:30—WMAQ—Centennial of trans-Atlantic steam navigation.  
8—WBBM—Professor Quiz.  
8—WLS—National Barn Dance.  
8:15—Montparnasse; "Norman Thomas, "Must America Go to War."  
8:30—WMAQ—American Portraits; "Mark Twain."  
9—WBBM—Your Hit Parade.  
9—WMAQ—NBC Symphony orchestra and Schola Cantorum.  
9:30—WLS—Family Party, with Annette King, Joe Dumond, Joe Gallichio's music, and Grace M. Ellis.

7:15—W-G-N—Ennio Rocognini's orchestra.  
WCFE—Colonial Musicals.  
7:30—W-G-N—Bob Crosby's orchestra.  
WLS—Barn Dance, with Lulu Belle.  
WMAQ—100th anniversary transatlantic steam navigation.  
WCFE—Spring Cleaning.  
WBBM—Johnny Presents.  
8:00—W-G-N—John Steele, commentator, from London Quiz [MBS].  
WBBM—Prof. Quiz.  
WLS—Barn Dance.  
8:15—W-G-N—Chicago Symphony orchestra [MBS].  
WIND—Book review.  
WMAQ—"Mark Twain," a play.  
WBBM—Saturday Serenade.  
9:00—WBBM—Your Hit Parade.  
WMAQ—Symphony orchestra.  
WLS—Barnyard Jamboree.  
WCFE—J. Robert Johnson, talk.  
WIND—Freddie Martin's orchestra.  
9:30—WLS—Family Party.  
9:45—WBBM—Economic Defense Problems of U. S. Possessions.  
10:00—WLS—Tall Story Club.  
WCFE—Make Believe Danceband.  
WBBM—Will Osborne's orchestra.  
10:15—W-G-N—Jack Russell's orch. [MBS].  
10:30—W-G-N—Abel Lynn's orch. [MBS].  
WLS—Fireside Party.  
WMAQ—Lon Dreese's orchestra.  
WIND—Freddie Martin's orchestra.  
10:45—WBBM—Bethy Goodman's orchestra.  
11:00—W-G-N—Isiah Jones' orch. [MBS].  
WBBM—Art Kassel's orchestra.  
WMAQ—Andy Kirk's orchestra.  
WLS—Barn Dance.  
WIND—Ted Weems' orchestra.  
11:15—WMAQ—Streamline Revue.  
11:30—W-G-N—Bob Crosby's orch. [MBS].  
WBBM—Nat Brandwynne's orchestra.  
WMAQ—Barro's orchestra.  
WCFE—Herbie Kay's orchestra.  
Midnight—W-G-N—Anson Weeks' orchestra [MBS].  
WBBM—Musical Weather Man.  
WMAQ—Corey Lynn's orchestra.  
WIND—Nite Watch.  
WENR—Christenson's orchestra.

### A. M.

12:30—W-G-N—Jan Garber's orch. [MBS].  
WMAQ—Singing Neighbor.  
1:00—W-G-N—Ted Fiorito's orch. [MBS].  
1:30—W-G-N—Jack Russell's orchestra.

### ON SHORT WAVES.

#### [CENTRAL STANDARD TIME.]

BERLIN—4:15 p. m.—Building Berlin's newest underground railway. DJD. 24.4 m., 11.77 meg.  
LONDON—6 p. m.—"The Boomerang Beam," a play by Robert Cromble. GSP, 19.6 m., 15.31 meg.; GSD, 25.5 m., 11.75 meg.; GSC, 31.3 m., 9.58 meg.; GSB, 31.5 m., 9.51 meg.  
ROME—6:30 p. m.—Chamber Music; Ralmondo Kaskelino: "Autarchy in Textiles. 2 RO, 31.1 m., 9.63 meg.; IRF, 30.5 m., 9.83 meg.; IQY, 25.21 m., 11.90 meg.  
BERLIN—8:15 p. m.—Dance music. DJD, 25.4 m., 11.77 meg.  
PARIS—9:45 p. m.—Records. TPA 4, 25.6 m., 11.72 meg.  
LONDON—9:55 p. m.—Recital of Hebridean songs, with Celtic harp accompaniment.. GSD, 25.5 m., 11.75 meg.; GSC, 31.3 m., 9.58 meg.; GSB, 31.5 m., 9.51 meg.

#### CHICAGO WAVE LENGTHS.

W-G-N—720 WENR—870 WWAE—1200  
WIND—560 WAAF—920 WSBC—1210  
WMAQ—670 WCFL—970 WHFC—1420  
WBBM—770 WMBI—1080 WHIP—1480  
WLS—870 WCBD—1080

A. M.  
6:45—W-G-N—Good Morning Program.  
7:00—W-G-N—California Sunshine.  
WLS—Julian Bentley.  
7:30—W-G-N—The Music Box.  
WBBM—Musical Clock.  
8:00—W-G-N—Good Morning Program.  
8:15—WLS—De Zurik Sisters.  
8:30—WMAQ—Whistler and His Dog.  
8:45—WLS—Hilltoppers.  
WMAQ—Landt Trio.  
9:00—W-G-N—Martha Crane and Helen Joyce.  
WCFL—Sweethearts of the Air.  
WMAQ—Amanda Snow, songs.  
WLS—Junior Stars Program.  
9:15—WAAF—Bible Stories for Children.  
9:30—W-G-N—Get Thin to Music [MBS].  
WMAQ—The Child Grows Up.  
WLS—Morning Jamboree.  
9:45—W-G-N—Len Salvo, organist.  
WCFL—Bittersweet Melodies.  
WBBM—Truman Bradley.  
WMAQ—Swing Serenade.  
10:00—W-G-N—June Baker, Home Management.  
WBBM—Saturday Sunshine.  
WLS—High School on Parade.  
10:15—W-G-N—Morning Melodies.  
WLS—Anti-Cruelty society, talk.  
WCFL—Heidelberg Men's Glee club.  
WMAQ—Ford Rush and Silent Slim.  
10:30—W-G-N—U. S. Army band [MBS].  
WCFL—Peekers in the Pantry.  
WMAQ—Half-past Eleven.  
WLS—Variety program.  
WJJD—Dental Society Round Table.  
11:00—W-G-N—Poetry. "New and Old."  
Margery Graham.  
WJJD—High school hour.  
WBBM—Meet Chicago.  
WCFL—Call to Youth.  
WLS—Short Stories.  
WMAQ—Abram Chasin's orchestra.  
11:15—W-G-N—The Magic Hour.  
WLS—Doh and Helen.  
WBBM—Haverford College Glee club.  
11:30—W-G-N—Quin Ryan's news comment.  
WBBM—American Dental association.  
WLS—Howard Peterson, organist.  
WGBS—Sunshine Hour.  
WAAF—Myrta Dee Sergeant.  
WMAQ—Farm and Home hour.  
WJJD—Judge J. M. Braude.  
11:45—W-G-N—Musical Mail Box.  
WLS—Markets.  
WJJD—Debaters' Forum.  
Noon—W-G-N—Man on State Street.  
WAAF—The symphonic hour.  
WMBI—Sacred music.  
WHIP—Southtown church hour.  
WLS—Poultry service time.  
WCFL—Hit review.  
WBBM—Oriental.

P. M.  
12:15—W-G-N—Alice Blue, organist.  
WBBM—"Social Change and Higher Education," discussion.  
12:30—W-G-N—Markets.  
WLS—Man on the Farm.  
WBBM—Buffalo Presents.  
WMAQ—Lani McIntyre's orchestra.  
WMAQ—American Society of News-  
12:35—W-G-N—Midday service; Harold Coffman, Pres. George Williams college, Chicago.  
1:00—W-G-N—Columbia-Navy Crew Races [MBS].  
WBBM—Man on the Street.  
WLS—Home Talent.  
paper Editors.  
WJJD—"You Can't Tell the Truth."  
WBBM—Meet the Missus.  
1:30—W-G-N—Alice Blue, pianist.  
WLS—Merry Go Round.  
WBBM—Flanagrams.  
1:45—W-G-N—The Leadoff Man.  
1:55—W-G-N—Baseball; Cubs vs. Cardinals.  
Also on WBBM, WCFL, WJJD, and WIND.  
2:00—WLS—Homemakers' hour.  
WMAQ—Golden Melodies.  
2:30—WAAF—A Mood in Blue.  
WMAQ—Swingalong.  
3:00—WENR—Club Matinée.  
6:30—WAAF—Don Bolt.  
WMAQ—Broadcast from Berlin.  
4:00—W-G-N—Bill Anson.  
WENR—Great Plays, "The Silver King."  
WAAF—Rhumba Beat.  
WCFL—Rainbow Melodies.  
4:15—W-G-N—Panceto and his orch. [MBS].  
4:30—W-G-N—Art Kassel's orch. [MBS].  
5:00—W-G-N—Len Salvo, organist [MBS].  
WIND—Stamp Man.  
WMAQ—El Chico revue.  
WENR—Tune Twisters.  
5:15—W-G-N—"Schemes that Skin," strains [MBS].  
WIND—Let's Dance.  
WENR—Master Builders.  
5:30—W-G-N—Jazz and Jive [MBS].  
WCBD—Gospel broadcast.  
WBBM—Swedish Choral club.  
5:45—WMAQ—Religion in the News.  
6:00—W-G-N—Evening Serenade.  
WBBM—John Harrington, sports.  
WENR—Message of Israel.  
WMAQ—Kaltenmeyer's Kindergarten.  
6:15—WCFL—Armoir Tech, talk.  
WBBM—Dave Bacal and Three Notes.  
6:30—W-G-N—Bob Elson's Sports Review.  
WMAQ—Uncle Jim's Question Bee.  
WENR—Dinner Date.  
WBBM—Songs for You.  
WENR—California - Washington crew race.  
WCFL—Dinner concert.  
6:45—W-G-N—Kavler Cugat's orch. [MBS].  
WBBM—We the Vioas.  
WENR—Rit Del Mar orchestra.  
7:00—W-G-N—Tomorrow's Tribune.  
WMAQ—Robert L. Ripley.  
WBBM—Swing Lesson.  
WIND—Box-Brownie game re-created.  
WLS—Barn Parties.  
7:07—W-G-N—Sports Celebrity Parade.